

AXL BLUETOOTH MESH MODULE INSTALLATION GUIDE

AXL-BTM5-DBK2



P: 1300 818 884

E: smartobm@airtecaustralia.com.au

www.airteccorporation.com

INSTALLATION GUIDE

The AXL Bluetooth Mesh Module is a quick upgrade solution to vastly improve the Bluetooth connectivity of your AXL scales. This provides a faster and more seamless connection between your Airtec Scales, and enables compatibility with the new AXS Series Scales.

INSTRUCTIONS

STEP 1

Ensure the scale is powered off and open the clear plastic lid of the AXL scale.

STEP 2

Unscrew the four front plate screws and flip the plate flat.

STEP 3

Unscrew the two screws securing the green circuit board, then carefully remove the board.

STEP 4

Secure the white piezo cable to the circuit board using the cable tie.

STEP 5

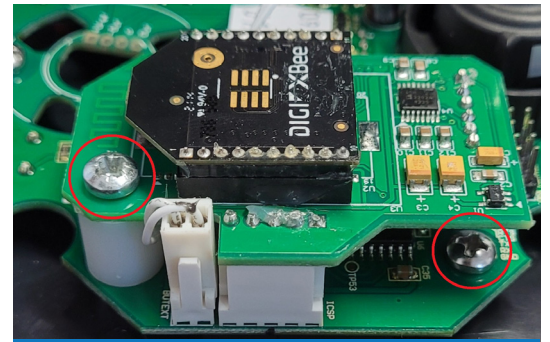
Attach the Bluetooth Mesh Module to the 6-pin connector on the right and secure the two screws.

STEP 6

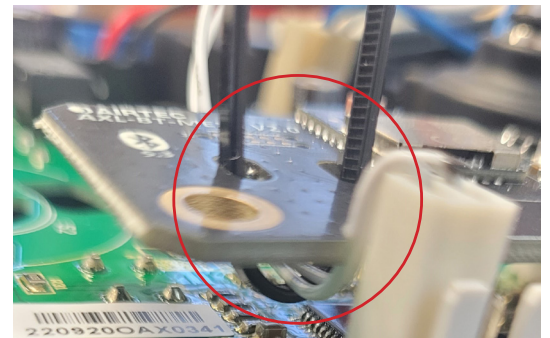
Tighten the zip tie and trim the excess.

STEP 7

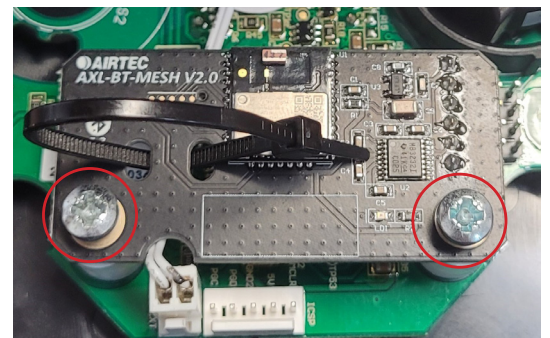
Screw the front plate back on to complete the installation.



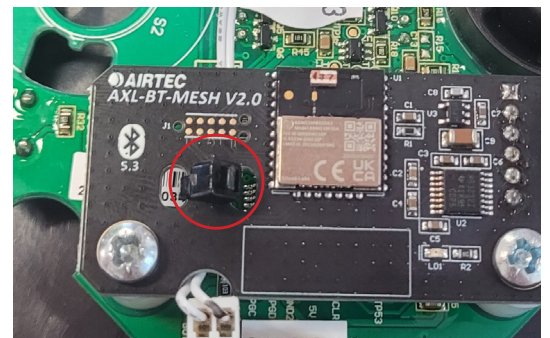
STEP 3



STEP 4



STEP 5



STEP 6

NEED HELP? CONTACT US:

P: 1300 818 884

E: smartobm@airtecaustralia.com.au



www.airteccorporation.com